



Eby staying sharp for pros  
**Page 1B**

## School boards revisit budgets, 2A

Primary elections, Page 9A

Tax incentives, Page 10A

County clerk outlines how  
to participate in May 27 voting

New law could limit tax base  
available to county from nuke plant

Wednesday, April 2, 2008

Established 1865

# The Owyhee Avalanche

VOLUME 23, NUMBER 14

HOMEDALE, OWYHEE COUNTY, IDAHO

SEVENTY-FIVE CENTS

## Council commits land for airport

No timeline set  
for development  
progress

Fifteen days after it decided not to act because of a lack of information, the Homedale City Council voted to commit acreage to airport expansion Thursday. Council president Dave

Downum voted against the move, which came without a written plan of development from airport businessmen or input from city engineer Fred Ostler. "I think it's a good idea to give

some property to the airport, but we need some guidance from our engineer to ensure it benefits everybody best," Downum said. "To randomly pick an amount of ground is not the way to go."

The city council voted to table the request for a commitment after discussion at its March 12 meeting. At the time, councilmen

— See *Airport*, page 5A



### Agencies work together in Marsing

A Canyon County Sheriff's deputy talks to suspect Thomas Patanjo, right, as Owyhee County Sheriff's Chief Deputy Bruce Cameron stands nearby after Wednesday afternoon's chase.

## Suspected thieves nabbed

Brief chase across  
river ends under  
Marsing bridge

A Marsing man on probation for a drug-related conviction was arrested again Wednesday after Canyon County Sheriff's deputies

chased him and two companions into Owyhee County. Thomas James Patanjo, 20, of Marsing was taken into custody along with a female juvenile on suspicion of stealing irrigation pipe from a field near Locust Lane and Perch Road. The pair was apprehended after leading Canyon deputies across

the Snake River and then trying to flee on foot after ditching a Chevrolet Corsica under the bridge at Marsing's Island Park. "We found the girl in the weeds, and Thomas was hiding in a chicken house," Owyhee County Sheriff's Det. Jim Bish said.

— See *Nabbed*, page 5A

## County takes step toward expanding its Murphy offices

Commissioners begin process  
of buying land from county employee

The sardine-can conditions inside the Owyhee County Courthouse cramp the style of everyone who works in the Murphy offices, so it's fitting that the board of commissioners has begun to seek a solution through someone who is in those offices each day. "The courthouse is pretty cramped for the offices that are there," board chair Jerry Hoagland said.

At a recent meeting, county commissioners voted unanimously to buy nearly 1½ acres in Murphy for \$117,000 from Ronald and NaDean Goff. NaDean works in the county seat's Department of Motor Vehicles branch. The Goffs' place is located at the corner of Idaho highway 78 and Pershal Street in Murphy, southeast of the existing county

— See *County*, page 4A

## Rec leaders exploring Homedale tax district

Officers from Homedale Youth Sports Inc. and the Homedale City Council learned what it will take to form a recreation district Thursday night at a special meeting. Middleton Recreation District

president Tim O'Meara, who has been on board with the Canyon County taxing entity since its inception in 1996, took folks through what is required to

— See *District*, page 3A

**Inside**  
Baseball back  
in Adrian  
In Sports

School menus	6A	Looking Back	5B
Calendar	7A	Commentary	6-7B
Dave \$ays	7A	Legals	8-9B
Sports	1-3B, 12B	Classifieds	10-11B

**Subscribe today**  
Get the news source of the Owyhees delivered  
directly to you each Wednesday  
Only \$31.80 in Owyhee County  
**Call 337-4681**

# Homedale schools’ financial future looks solid

Superintendent: No pressing need for new buildings; board of trustees revamps budget at April 14 meeting

Homedale School District superintendent Tim Rosandick painted a favorable financial outlook for the district as school trustees prepare to revise the fiscal year 2008 budget.

“It’s a common practice,” Rosandick said of the budget revision.

Now that firm numbers on the school year’s revenue and enrollment are in, Rosandick said the school board will hold a meeting April 14 to adjust the budget for the remainder of the fiscal year, which runs through June 30.

“This time of year, we have a better handle on what our revenue is and what the school district’s needs are,” Rosandick said.

The meeting will be held at 7 p.m. April 14 at the district office, 116 E. Owyhee Ave.

Each year, school districts create what essentially are preliminary budgets using projections of staffing costs and revenue that will come from the state department of education. Revenue projections entail trying to guess what the coming year’s enrollment and average daily attendance (ADA) numbers will be.

Each February, the district receives more concrete numbers on the assistance the state will send. The allocation is based on “support units” derived from the ADA figures.

Rosandick said the school board also uses the amount of funding from the state as a barometer for next year’s budget.

“In a way, it kind of sets the table to begin work on the FY ’09 budget,” he said.

Rosandick doesn’t expect many surprises in the April 14 budget meeting, which is part of the school board’s regular monthly meeting.

One of the biggest concerns is having enough money for employee salary and benefits, which makes up about 85 percent of the district’s budget.

“After a preliminary look this winter, it looks like we had done a reasonably good job of budgeting adequately for employment costs,” Rosandick said.

The Idaho Legislature has increased the amount of money provided for salaries, but Rosandick said the fact that lawmakers only added 1 percent to the discretionary spending

portion of state assistance — the money used for everything in a budget other than salaries — is out of touch with today’s economic realities.

Among the line items falling under the discretionary spending umbrella: Fuel costs, health insurance and paper costs, just to name a few, Rosandick said.

“If you ask any business owner if the cost of doing business has only gone up 1 percent, he said that’s unrealistic,” Rosandick said. The Legislature has minimally attended to the other costs associated with operating schools.”

Despite inflation and a flattening of the financial boost coming from the state, the district’s short-term outlook remains solid, Rosandick said.

And he reported few clouds in the school district’s long-term financial forecast despite a recent report projecting that Homedale’s population growth between 2005 and 2010 will only be between 1.1 percent and 1.8 percent.

Data from Denver-based BBC Research and Consulting’s population growth projection study was discussed at the school board’s March meeting.

In his board meeting summary memo posted on [www.homedaleschools.org](http://www.homedaleschools.org), Rosandick wrote that there was a potential for “fairly minimal” future growth.

“The board is very much interested in coming up with a long-range facility plan, and one hurdle we had to cross was what’s going to happen in Homedale — is it going to get bigger or smaller, are we going to have more kids or fewer?” Rosandick said.

While flat growth will affect potential state funding because of the risk that enrollment figures won’t rise, the silver lining of the report shows that the school district probably won’t have to worry about building new schools and can concentrate expenditures on upgrading and improving the three existing campuses.

Rosandick said the BBC Research and Consulting report can provide guidance for the school board on the fate of aging Homedale High School, which was built 67 years ago, as well as Homedale Elementary School and Homedale Middle School.

But the superintendent speculated that patrons won’t have to worry about footing the bill for a replacement campus at any level any time soon.

“Before I retire from this school district, I don’t think we will build a new facility,” Rosandick said. “If there is an economic boon or some new manufacturing plant comes into the area, that would change dramatically.”

The district will continue to upgrade and improve the existing

facilities, Rosandick said, even though state law has put a crimp on the amount of money available for such repairs.

At its March meeting, the school board hired Design West Architects to draft plans for remodeling the girls locker room at the high school and for building a handicap restroom near the main gymnasium’s foyer.

Rosandick said the handicap restroom is an upgrade and was not facilitated by any Americans with Disabilities Act deficiencies at the school.

“It’s in our best interest to ensure that facility is available for use by all abilities,” he said.

The school district will send out bid proposals later this month with a bid opening near the end of April. Construction is projected to begin in early June with an eye for completion in mid-August, Rosandick said.

The superintendent also said that while Design West is drawing up plans for both additions, the projects actually are separate.

“Those two needs of a locker room for the girls and a handicapped bathroom have been lingering needs at that school that needed to be addressed.

“Given the future use of that school, it makes sense to do it now.”

— JPB

## Marsing Lions bingo season finale set

The last Marsing Lions Club bingo fundraiser of the season will be held Saturday at the Phipps-Watson Marsing American Legion Community Center, 126 W. 2<sup>nd</sup> St. N.

The early bird game begins at 6:45 p.m., followed by regular bingo at 7 p.m. Cost of the games starts at \$15 per person.

Soft drinks will be sold and free popcorn will be served.

## Marsing school district set to spend \$650K more than FY ’07

The Marsing School District board of trustees will hold a public hearing Tuesday to analyze a revised budget that will reflect an increase of more than \$650,000 over the fiscal year 2008 budget proposed last year. More than \$500,000 of that increase is in maintenance and operation (M&O) funds.

The meeting takes place at 7:30 p.m. at the district office board room on 8th Avenue West.

The amended budget that the school board will study Monday is set at more than \$8.5 million, including more than \$5.6 million in M&O expenditures. The \$8.5 million budget for the fiscal year that ends on June 30 is about \$675,000 more than the district spent in FY 2007.

But the balance sheet also reflects that the district will receive about \$200,000 more in local and state M&O revenues than originally projected last summer. Other revenue projections, however, have turned out to be off by a total of about \$175,000.

**COW POKES®**

**By Ace Reid**

“Naw I ain’t give up drinkin’, but after that horse race I’ve sure quit gamblin’!”

**When it comes to tax help, we’re a sure bet!**

**BOWEN PARKER DAY**  
BOISE - NAMPA - HOMEDALE  
CERTIFIED PUBLIC ACCOUNTANTS CHARTERED

19 E. Wyoming, Homedale - **337-3271**

Accounting .. Auditing .. Tax Services .. Financial Services

**Vote for**

**George Hyer**

**Owyhee County**

**District II Commissioner**

**True Conservative Values**

**God, Family & Community**

**Primary Election May 27**

*Paid for by George Hyer*

**Keep up with county news in the Avalanche**



# City addresses pedestrian safety

The Homedale City Council took measures Thursday to improve the safety of pedestrians crossing Idaho Avenue.

The council unanimously approved paying Idaho Power \$1,072 to install two streetlights and a pole on either end of City Park. The lights would illuminate the existing crosswalks most frequently used by Homedale High School students.

The city won't be able to install directional floodlights, but traditional streetlights will be used to shine light on the crosswalk at the intersection of East Idaho

Avenue and Industrial Road/3rd Street East. A pole and light will be installed at the Idaho Avenue-2nd Street East intersection.

The crosswalks repainted last year already have faded around City Park, but city public works supervisor Larry Bauer told the council Thursday that there is technology available that would prolong the life of the intersection markings and increase visibility.

Bauer said the city can "piggyback" a program from the Idaho Transportation Department to apply a thermal plastic laminate on crosswalks. He said the

laminate first would be applied at 1st Street East and 2nd Street East across Idaho Avenue.

Bauer also said that working through the state keeps material costs low — about \$240 for both crosswalks. He said the crosswalks would last between four and five years.

**Vandalism subsidies**

Homedale Police Chief Jeff Eidemiller reported that the frequency of spray-paint tags on walls and fences around town has subsided somewhat.

"We're kind of throwing all the

manpower we've got at it right now, and we'll keep digging away until we catch them," he said.

Eidemiller also addressed youths riding their bicycles on city sidewalks. When West Idaho Avenue businessman Del Motz pointed out his frustration at bicyclists whizzing by his businesses, Eidemiller pointed out that city ordinance prohibits the riding of bicycles on sidewalks.

Mayor Harold Wilson also pointed out that School Resource Officer Mike McFetridge could spread the word at the schools to keep kids off the sidewalks.

## HHS junior class plans fundraiser

The Homedale High School Class of 2009 will hold a Bingo and Baked Potato Fundraiser from 6 p.m. to 8 p.m. Monday inside the high school cafeteria.

Members of the school's junior class will be selling baked potatoes with all of the trimmings, drinks and cinnamon twists.

Bingo cards will be sold on a per-card, per-game basis. Prizes will be available for winners.

Proceeds from the event will be used for senior-year activities and the drug-free all-night party held after graduation next year.

# From page 1

## ✓ District: Middleton rec supervisor says get measure on ballot this year

create a taxing district during the meeting.

And O'Meara told the HYS group, which included president Shane Brown and treasurer Brad Dines among others, that it is possible to get the taxing district initiative on the ballot in time for the November election.

The process begins with defining the boundaries of the district and drafting a petition that must be signed by 20 percent of the eligible voters in the prospective district.

O'Meara urged HYS to start the petition drive as early as this week to ensure a Nov. 4 election. According to the election calendar on the Idaho Secretary of State's Web site, May 1 is the deadline to get initiative petitions to the Owyhee County Clerk's office in Murphy for signature verification and to begin the process to consider the initiative for this fall's general election. O'Meara said piggybacking with the general election could

save district supporters some expenses.

A simple majority of 50 percent plus one vote is necessary to form a new taxing district, O'Meara said.

O'Meara also suggested that the group build the district on a mil levy at the maximum rate of .06 cents per \$100,000 of property value in the district. He also said more money could be saved if the group used existing fire or school district lines to establish the rec district, rather than shelling out money to draw a new district.

Dines said that a district using the boundaries of the Homedale School District has a net market value of \$252 million, which would bring in \$151,000 in annual revenue.

O'Meara also stressed that HYS would be a standalone organization and cannot be affiliated with any recreation district. Also, he made clear that the rec district would have to serve more than just youth sports.

He said all ages must benefit from the district's services.

He also said that once a district is formed, the appointed board of commissioners can work with the City of Homedale for an agreement involving Sundance Park.

But, O'Meara told Brown that the district won't have to take over every existing park- and recreation-related structure in the district boundaries. Brown was concerned about any potential district being forced to take over Homedale's troubled swimming pool.

"This would make a better situation for youth in the long run," councilman Tim Downing said. "It would mean better equipment in the parks and it would make sports programs more affordable."

"I can see it's going to take some work and effort to do it, but it'll be worth it."

— JPB



**Rec president offers advice**  
*Middleton Recreation District president Tim O'Meara outlines what it takes to kick off a recreation taxing district election as board members of Homedale Youth Sports Inc., listen Thursday during a special meeting of the Homedale City Council.*

**DITCH PUMPS - WELL PUMPS**  
PUMP SALES, SERVICE, REPAIRS & INSTALLATION

**KINETICO QUALITY WATER SYSTEMS**  
A KINETICO QUALITY WATER SYSTEMS SATELLITE DEALER  
NEW SALES, SERVICE, INSTALLATION & SUPPLIES

**WATER HEATERS**  
SALES, REPAIRS & REPLACEMENT

*Your water is our business*

**Marsing**  
HARDWARE & PUMP

**Monday-Friday 8:00am-6:00pm**  
**Sat 8:00am-4:00pm**

**True Value**  
Help is Just Around the Corner

**896-4162**

Re-Elect  
**Aman** for  
**SHERIFF**

**Re-Elect Sheriff Gary Aman**

*"I would like to endorse Sheriff Gary Aman for Owyhee County Sheriff. I have known and worked with Gary for many years and I have the utmost trust in his abilities and in his dedication to the people of Owyhee County. The Owyhee County Sheriff's Office and the Nampa Police Department enjoy a great working relationship."*

**Chief Bill Augsburg, Nampa Police Department**

*"If it isn't broke, don't try to fix it; law enforcement valley wide has benefited from Sheriff Gary Aman's leadership and cooperation. Let's keep him in office and continue our fight against crime together."*

**Chief Chris Allgood, Caldwell Police Department**

**Vote May 27 for Sheriff Gary Aman**

*Paid by Committee to re-elect Gary Aman, Sue Davenport, Treas.*



From page 1

✓ **County:** More space would relieve office congestion

offices. According to minutes from the March 17 commissioners meeting, county Prosecuting Attorney Matthew Faulks has been directed to draft a purchase agreement for the Goffs' property, which consists of eight city lots, according to county Assessor Brett Endicott.

Hoagland expects Faulks to present the purchase agreement for review during Monday's upcoming commissioners meeting. The board didn't meet this week because members only hold four weekly meetings a month and there were five Mondays in March.

The parcel fronts Idaho 78. The post office and another private residence stand between the Goff property and the courthouse.

An actual new building in Murphy is still several years away, but County Clerk Charlotte Sherburn said that the commissioners decided that even using the land to relieve vehicle congestion would make the transaction a wise move.

According to NaDean Goff, the lots are divided by an alley that never has been vacated, so it would give the county access to the courthouse and the annex, which are west of the land. That setup also would provide an opportunity for additional parking.

"We are very short of parking on heavy court days, and the board felt that even if we just used it for parking it would be a good idea to acquire the property," Sherburn said.

The money for the purchase would come from the county's PILT Trust, which is funded by federal Payments in Lieu of Taxes monies, Sherburn said. The commissioners earlier this year dedicated \$250,000 from the fund to buy the old Owyhee Conservation District building in Marsing to get more room for DMV and sheriff satellite offices.

Sherburn said the Trust, which was created in October 2002, holds more than \$1.2 million right now.

"There is quite a bit, but there is still not enough to actually construct the (new Murphy building)," Hoagland said of the trust fund. "We're a long ways from constructing the building."

Other needs that must be met by the PILT Fund include courthouse improvements and upgrades, such as a renovation of the courthouse entrance to accommodate a needed security system, Sherburn said.

Other courthouse plans include building conference rooms to allow clients to confer with their attorneys. Sherburn said such meetings now take place in the courthouse lobby.

There are no immediate plans to build on the property, but Hoagland said the land could be used for expansion of county offices in the future.

"We've been talking about it amongst ourselves about needing to expand somewhere in the Murphy area," Hoagland said. "We have approached a couple

different places on where to expand. This place has come up, and we decided to make an offer."

Hoagland said the purchase is part of the overall plan to move offices for the clerk, assessor, treasurer, Planning and Zoning and Building departments and commissioners out of the courthouse and annex, which would allow more room for the judicial branch.

"The idea is to get things more centralized," Hoagland said. "When we have Planning and Zoning hearings, we have to schedule around the court schedule."

Many times, P&Z commission hearings have been held inside the annex building, which actually holds offices for the Planning and Zoning and Building departments.

Sherburn said that even commission meetings sometimes have to be held inside the annex when both magistrate and district court is in session because there are only two courtrooms.

Sherburn welcomes the opportunity to move her workspace out of the courthouse, which Hoagland said was built in 1934.

"We are very crowded in the clerk's office," she said. "I would very much appreciate having an office. The treasurer (Brenda Richards) also has a need for an office."

The Goffs are familiar with the space issues inside the county

offices. NaDean is a veteran employee of the DMV office.

"It's kind of a good location because it's really close to the existing courthouse, and working as long as I have with the county, I know that the county needs all the help it can get," she said, adding that she and her husband only are asking market value for the property.

NaDean also said she sympathizes with fellow county workers who have little room in their offices.

"It's almost like I'm in a cubicle even though I'm in a little room," she said. "There's nowhere to go unless you build or get more land."

NaDean said she and her husband plan to move from Murphy when she retires from her county job in five years. Although the purchase agreement hasn't been drafted yet, Hoagland said the deal probably would include a stipulation allowing the Goffs to lease their house until they are ready to leave town.

The property used to be the home to a former magistrate judge, NaDean said, adding she and her husband have lived in the house since 1981.

— JPB

**Minister raises money for MDA**

Snake River Valley Fellowship minister Robert Cooperstein has joined the fight against muscular dystrophy.

Cooperstein, whose ministry serves the Homedale area, has signed up for the Muscular Dystrophy Association's Nampa/Caldwell Lock Up, and is looking for pledges for the cause.

He has until April 10 to meet his goal of \$1,600.

To learn more about Cooperstein's efforts or to donate, visit <https://www.mdaevent.org/ParticipantInfo.aspx?j=5f99da90-3bff-4a2e-8e0d-a81b2812a5fe>

MDA serves people with neuromuscular disease by providing clinics, support groups, assistance with the purchase and repair of wheelchairs, braces and communication devices, and summer camp for kids. MDA also funds research grants to help find treatments and cures for some 43 neuromuscular diseases that affect people of all ages.

**Correction**

Owyhee County Prosecuting Attorney candidate Douglas Emery spoke directly with a person in the Secretary of State's office before filing his nomination petition, not with Secretary of State Ben Ysursa as was reported in March 26 edition of The Owyhee Avalanche.

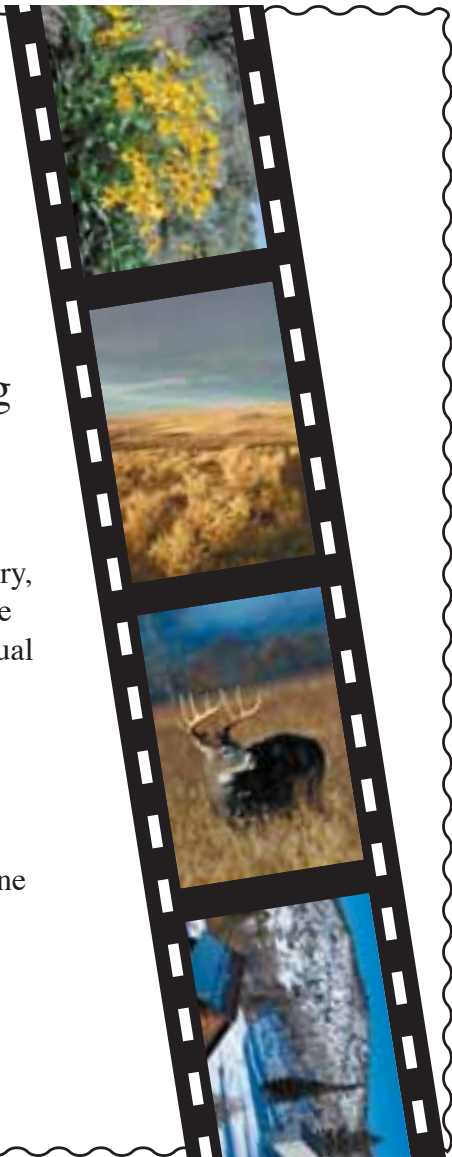
Help us  
Capture the Story  
of Owyhee County  
Owyhee Avalanche is seeking  
submitted photos for our  
2009 Calendar

Submit your photos of Owyhee County scenery, wildlife or historical places and we'll choose 12 of our favorites to be published in our annual calendar. Photo credits will be given.

Photos must be submitted digitally and at the highest resolution possible.

Please include photographer's name and phone number. Also include photo information (location, date taken, subject matter, etc.)

Photos may be emailed to  
[owyheeavalanche@cableone.net](mailto:owyheeavalanche@cableone.net)  
For more information, call 337-4681



The Owyhee Avalanche

P.O. BOX 97 • HOMEDALE, ID 83628  
PHONE 208 / 337-4681 • FAX 208 / 337-4867  
E-mail [owyheeavalanche@cableone.net](mailto:owyheeavalanche@cableone.net)  
[www.owyheepublishing.com](http://www.owyheepublishing.com)



Member

U.S.P.S. NO. 416-340  
Copyright 2007— ISSN #8750-6823

JOE E. AMAN, publisher  
JON P. BROWN, managing editor  
E-mail: [jbrowneditor@cableone.net](mailto:jbrowneditor@cableone.net)  
ROB HEDDEN, reporter  
E-mail: [rhedden@cableone.net](mailto:rhedden@cableone.net)  
JENNIFER STUTHEIT, office  
ROBERT AMAN, composition

Published each week in Homedale, Idaho by Owyhee Avalanche, Inc. Entered as Periodical, paid at the Post Office at Homedale, ID under the Act of March 3, 1879. POSTMASTER: send address changes to THE OWYHEE AVALANCHE, P.O. 97, Homedale, ID 83628.

**Annual Subscription Rates:**

Owyhee County.....	\$31.80
Canyon, Ada, Malheur counties .....	37.10
Elsewhere in Idaho.....	42.40
Elsewhere (outside Idaho).....	40.00

**Deadlines**

**Classifieds**

Monday noon the week of publication

**Legal notices**

Friday noon the week prior to publication

**Display advertising**

Friday noon the week prior to publication

**Inserts**

Friday noon the week prior to publication

**Letters to the editor**

Friday noon the week prior to publication  
(Limit 300 words, signed, with day phone number.)



## From page 1

### ✓ Nabbed: Second Owyhee man turns himself in to Canyon authorities

According to the Canyon County Web site, Patanjo was booked into jail on two counts of petit theft and one count of resisting an officer.

Patanjo is on two years' probation in Owyhee County after pleading guilty to misdemeanor drug possession Aug. 10 in district court.

He was originally charged with a felony drug manufacturing charge when authorities found marijuana plants and equipment used in the cultivation of the drug inside his residence upon his arrest in March 2007. Patanjo had 160 days of a six-month jail sentence suspended when he pleaded guilty in August.

During Wednesday's incident, Bish said three suspects exited the car and ran toward the Sandbar Restaurant. The third suspect, later identified by Bish as Shane Garoutte, eluded authorities.

Bish said that Garoutte subsequently turned himself in, and a check with Canyon County Jail officials confirmed he had been in custody but was out of jail by Friday afternoon.

Bish and Owyhee County Chief Deputy Bruce Cameron, along with Homedale Police Chief Jeff Eidemiller and Officer Atanacio Montes assisted in the search for the suspects once they crossed into Owyhee County. A Canyon County K-9 unit also was utilized.

Wednesday's pursuit began when the trio of suspects allegedly stole aluminum siphon tubes during a daylight raid on a Canyon County farm. Bish said the victim followed the culprits in his pickup and remained in contact with responding CCSO deputies to give

them updates on the location of the suspects.

"They just went out and spotted a farmer's siphon tubes and started loading them up and took off," Bish said.

A search of the suspects' car turned up a pile of coated copper wire and a couple of car batteries in the trunk. Bish said that after stripping the plastic coating, thieves sell the wire to scrap yards for cash; the same goes for recycling old batteries. Bish said copper wire is bringing \$3 to \$4 a pound from scrap dealers, and that thieves are taking wire off irrigation pivots, among other places.

"They don't work, and that's how they make their money, no matter what they use it for," Bish said.

Several wire thefts — resulting in the disappearance of several thousand pounds of copper — have been reported in the county in recent months, including three in the past three weeks. Bish said some arrests have been made while other thefts are still under investigation. Authorities do have suspects, the Owyhee County Sheriff's Office veteran said.

The phenomenon is not unique to Owyhee County or even Idaho.

"This isn't something we're working alone," Bish said. "I'm working daily with Canyon County, Ada County and surrounding agencies. It's a work in progress."

While siphon tube thefts are nothing new to authorities, Bish said that law enforcement officials expect a spike in the crimes with irrigation season approaching.

The detective said thieves are



#### Wiring, batteries found in trunk

Owyhee County Sheriff's Office Chief Deputy Bruce Cameron examines the contents of the trunk of a Chevrolet Corsica that Canyon County Sheriff's deputies chased into Marsing on Wednesday. The occupants of the car are suspected of stealing wiring and car batteries that they would sell for cash, according to Owyhee County Sheriff's Det. Jim Bish.

more active and bold because aluminum prices are high. So is opportunity because irrigators have brought siphon tubes out of storage in preparation for the watering season, which water officials have said could start on April 14 in the Homedale-Marsing area.

Bish said it's nearly impossible to re-connect stolen property with its owners because there are no ownership markings on the equipment and thieves cut the copper wire into smaller lengths before selling it to scrap yards.

"It's hard to prove, unless you catch them with it like today," Bish said. "It was a pretty brazen daylight deal."

— JPB



### ✓ Airport: Leases may have to be reworked to gain access to seven acres

Eino Hendrickson and Aaron Tines said more time was needed, and Hendrickson expressed reservations because there was no concrete idea how much it would cost to develop the ground for the construction of hangars.

But Hendrickson and Tines joined Tim Downing in voting to commit 3 1/2 acres to airport development after airport development committee spokesman Ed Leavitt addressed the council Thursday. Although the council discussed setting a time limit for airport interests to show progress in development, no timeframe was stipulated in the final vote.

Before he voted for designation, Hendrickson voiced his concern about committing land without any idea of how the airport interests would proceed with

development.

"I have no problem with the notion that we'll do nothing else with (the land), but we still need to know how much it'll cost to level the ground," Hendrickson said, with Downing concurring.

Hendrickson even questioned the reality of building 40 hangars in Homedale, which is the ultimate vision for the airport development committee.

"In all reality, Nampa doesn't even have as many hangars as you're talking about putting down there," he told Leavitt.

Tines said he voted for the commitment to give the airport businessmen an opportunity to analyzed the needs for development.

"I, of course, cannot speak for the whole council, but my reasoning behind my vote is to be

able to give them room to expand and know how much room they have to expand on," Tines said. "I believe that there will be planning processes so that all can have their input relayed as far as needs and limitations. It is hard for them to do any planning without knowing how much room is available."

Leavitt, a Homedale resident and businessman who wants to build a hangar at the airport, has served as spokesman for the airport interests in each of the past two council meetings.

On Thursday, he told councilmen that the seven acres had been surveyed and staked, but there had been no word on how much it would cost to level the land in preparation for development.

When Downing expressed concern that the city didn't have the money to pay for leveling

of any new airport land, Leavitt suggested that the city require the infrastructure costs, such as leveling, be paid by those who want to build hangars on the land.

"I don't think there would be any big cost on the part of the lessor," Leavitt said.

Leavitt also brought to the council's attention that the acreage proposed for new hangars is landlocked, which would require the establishment of right-of-way through existing airport properties to build a taxiway from the 3 1/2 acres to the runway at the Homedale Municipal Airport.

"If the land is approved for expansion, you'd have to go into the old leases," Leavitt said. "Right now, there is no way to get aircraft from the land to the

runway."

But there seemed to be little concern about the possible roadblock to development. Leavitt and city public works supervisor Larry Bauer both said that John Rogers, one of the two lessees with land suitable for easements, seems acceptable to reworking his lease.

Leavitt said it was imperative that the city give some type of designation to at least a portion of the seven-acre parcel that has been a source of controversy since Homedale bought it from the state two years ago.

"We as an airport committee can't do anything unless you are willing to step up and listen to what we have to say," Leavitt said.

— JPB



# Births

## Taven Boyd Elias Burrright

Taven Boyd Elias Burrright was born to Jake and Raycal Burrright of Homedale on Feb. 29, 2009. He weighed in at 9 pounds, 5 ounces and was 20 inches long.

Maternal grandparents are Elias and Tamra Garcia of Homedale and Kurt Hulse of Homedale. Great grandparents are Boyd and Betty Eoff of Homedale.

Paternal grandparents are Lois Buck of Emmett and Denny Burrright of Wilder. Great grandparents are Boyd and Eileen Henry of Caldwell.

Taven joins two sisters, Kennedee and Ashlyn.



Taven Boyd Elias Burrright

## Emma Nicole Irene Eoff

Duane and Lacey Eoff, formerly of Homedale, are the proud parents of a little girl, Emma Nicole Irene Eoff.

She was born on March 26, 2008, and weighed 7 pounds, 6 ounces and was 19 inches long.

Maternal grandparents are Kenny

and Debbi Lunsford of Melba.

Paternal grandparents are Kelly Eoff of Homedale and Jerry and Connie Nikelson of Caldwell.

Great grandparents are Boyd and Betty Eoff of Homedale and Lawrence and Marjie Baldwin of Caldwell.

## Matthew Cruz Sheley

Matthew Cruz Sheley was born to Matthew and Heather Sheley of Homedale on March 21, 2008. He weight 7 pounds, 9 ounces and measured 20 inches long.

Maternal grandparents are Rudy Garcia and JoAnn Redburn of Homedale and Todd and Kathy Redburn of St. Louis, Mo. Great grandparents are Boyd and Betty Eoff of Homedale and Irvin and Patricia Redburn of St. Louis, Mo.

Paternal grandparents are Debbie and Tim Longhofer of Homedale and Marvin and Shannon Sheley of Wilder. Great grandmothers are Mary Vera of Ceres, Calif., and Della Sheley of Salida, Calif.



Matthew Cruz Sheley

Matthew is joined by a brother, Noah, and two sisters, Destiney and Madeline.

# School menus

### Homedale Elementary

- April 2: Crispito or toasted cheese sandwich, taco salad, churro, fruit & veggie bar, milk.
- April 3: Spaghetti or pizza hot pocket, French bread, green beans, fruit & veggie bar, milk.
- April 4: Ham/cheese or turkey sandwich, yogurt, potato chips, fruit & veggie bar, milk.
- April 7: Wiener wrap or chicken bacon melt, mac & cheese, green beans, rice krispy bar, fruit & veggie bar, milk.
- April 8: Beef or chicken taco, corn, fruit & veggie bar, milk.
- April 9: Chicken patty or rib-b-que, potato wedges, applesauce cake, fruit & veggie bar, milk.

### Homedale Middle

- April 2: Enchilada or chicken & noodles, corn, turnover, fruit & veggie bar, milk.
- April 3: Lasagna or pizza hot pocket, green beans, bread stick, fruit & veggie bar, milk.
- April 4: Pizza or popcorn chicken, salad, cookie, fruit & veggie bar, milk.
- April 7: Chicken patty or rib-b-que, tots, cookie, fruit & veggie bar, milk.
- April 8: Fish nuggets or mini corn dogs, rice, brownie, fruit & veggie bar, milk.
- April 9: Crispito or toasted cheese sandwich, taco salad, fruit & veggie bar, milk.

### Homedale High

- April 2: Lasagna, burrito, or pizza hot pocket, French bread, fruit & veggie bar, milk.
- April 3: Chicken patty or hamburger, potato wedges, sherbet cup, fruit & veggie bar, milk.
- April 4: Chicken taco or French dip sandwich, corn, fruit & veggie bar, milk.
- April 7: Cheese pizza, nachos, or chef salad, cookie, fruit & veggie bar, milk.
- April 8: Chicken nuggets or egg roll, rice pilaf, green beans, fortune cookie, fruit & veggie bar, milk.
- April 9: Idaho haystack, burrito or pizza hot pocket, cinnamon roll, fruit & veggie bar, milk.

### Marsing

- April 2: Red Baron pizza, salad, fruit, milk, Chinese egg roll, salad bar 4<sup>th</sup>-12<sup>th</sup>, roll.
- April 3: Corn dog, fruit, veggie, milk, tostada, salad bar 4<sup>th</sup>-12<sup>th</sup>, roll.
- April 4: Sloppy Joe, fruit jello, veggie, milk, chicken patty, salad bar 4<sup>th</sup>-12<sup>th</sup>, roll.
- April 7: Hamburger, fruit, potato wedges, milk, French dip, salad bar 4<sup>th</sup>-12<sup>th</sup>, roll.
- April 8: Ham/cheese sandwich, fruit, milk, cf steak, salad bar 4<sup>th</sup>-12<sup>th</sup>, cinnamon twist.
- April 9: Taco, fruit, veggie, milk, Red Baron pizza, salad bar 4<sup>th</sup>-12<sup>th</sup>, roll.

# Death notices

**BADEN EUGENE CRAWFORD**, 75, of Murphy, died Wednesday, March 26, 2008, at home. Private services were held at Nampa Funeral Home, Yraguen Chapel.

**REED D. LARSEN**, 93, of Homedale died Friday, March 28, 2008, at a Homedale care center. Arrangements are pending with Flahiff Funeral Chapel, Homedale.

# Senior menu

### Homedale center

- April 2: Chicken & noodles, broccoli beet salad, roll, beverage.
- April 3: Spaghetti & sausage, salad, roll, beverage.
- April 8: Oven fried chicken, mashed potatoes, peas, gravy, roll, beverage
- April 9: Baked fish, macaroni & cheese, carrots, roll, beverage

## El-Ada offers aid to agencies

The El-Ada Community Action Partnership has received \$2,693 in federal assistance funds to aid emergency food and shelter programs in Owyhee County. The funds are Owyhee County’s portion of the Emergency Food and Shelter National Board Program, which is administered by the United Way of America.

Public or private organizations with a demonstrated capability to administer emergency food and/or shelter programs in Owyhee County, with an accounting system in place and non-discriminatory aid distribution programs are eligible to apply for a portion of the funds. Private voluntary organizations must also have a voluntary board of directors to be eligible for funding.

Interested aid organizations can apply for assistance by contacting El-Ada’s Owyhee County coordinator, Jan Clapier, by April 15.

El-Ada’s Owyhee County office is located at 15 W. Colorado Ave. in Homedale, and Clapier’s office telephone number is (208) 337-4812.

A board of local representatives will determine the distribution of funds among qualified entities applying for assistance.

The Emergency Food and Shelter National Board Program has operated since 1983 as a joint effort between public and private sector aid organizations.

The program has distributed over \$3 billion in the past 25 years.

## People Come First

Criminals are not deterred by county lines. We need to interact effectively with neighboring law enforcement agency systems without increasing operating expense.



**Daryl Crandall for Owyhee County Sheriff.**

Paid for by Crandall for Sheriff, Merleen Johns, Political Treasurer.

D087334

Read all about it  
in the Avalanche!

Buttercup Soaps LLC

goats milk soaps & body products

17670 Batt Corner Rd.  
Wilder, Idaho 83676

1/4 mile past Campbell Tractor on Batt Corner Rd.

Anniversary Sale

The month of April open on  
Thursday thru Sat. 11:00 am-4:00 pm

Come & see our new work shop!

Sample our products, see them &  
come sniff over 20 fragrances and 10 types of soaps.  
Many bath & body products, gift packs from \$5.00 & up.  
All of our products are handmade with your skin in mind.  
(most products made to order just for you at no extra charge)  
Ask questions or just have a cup of coffee & chat with us.  
get a Free guest soap per person!

Get them now before Mothers Day!

Made just for MOM

\* Over 10 types of soaps

\* Body Butters

\* Body Oils

\* Dead Sea Salts

\* Bath melts

\* Bath Fizzies

Lisa Wright @ AT&T Cel # 250-9463 or

Amber @ AT&T cel # 965-1611



# Your finances

## Never wait to put dent in your debt

Dear Dave,

I'm a senior in college, and I'll be doing my student teaching next semester. The tuition for student teaching has dropped, so I just got a \$2,300 refund on my university loan. An economics professor told me I should invest the money in the stock market, let it grow and then use it to pay off my student loan. What do you think?

— Brett

Dear Brett,

That's really bad advice, especially coming from an economics teacher. You should never invest money in the stock market unless you're going to stick it in there and leave it alone for at least five years. The market is just too volatile to play around like that for a shorter period of time.

Now, the stock market is a great place to invest over the long haul. But I don't want you stay in student loan debt for five years or more. I want you to get out of school, get your teaching career in gear and get this loan paid off as fast as you can.

If I were, you, Brett, I'd apply this money directly to the student loan principal now. If you stick it in your checking or savings account you'll probably end up blowing it on something you'll wish later you hadn't bought in the first place!

— Dave

Dear Dave,

How do you save up cash to buy a commercial building without getting killed by taxes? Our accountant keeps telling us that's what's going to happen if we just let the money we're saving sit there, instead of borrowing to make the purchase. What do you think?

— Jill

Dear Jill,

I think I've got two words for your accountant — you're fired!

If you buy a building, you're going to get killed with taxes. You can depreciate the building and even write off the interest, but none of this creates a tax-free situation. This is America. If you make a profit, you get taxed.

Sure, you're going to get taxed on the money as you save up to buy a building. But here's the situation. If you pay out \$10,000 a month in interest, that's \$120,000 a year. If you write off the interest, it's only going to save you about \$30,000 in taxes. A \$120,000 tax deduction doesn't save you \$120,000 in taxes. It only saves you the taxes ON the \$120,000.

Saving up to buy the building is a great idea, Jill. Going into debt just to get a tax deduction is a really bad idea!

— Dave



Dear Dave,

Is there anything wrong with buying large-ticket items using 12 months same as cash financing? It seems like an easy way to buy expensive items. You use their money, and if you pay it off early or on time you'll incur no fees or interest.

— Bud

Dear Bud,

Bad idea! To start with, 12 months is not the same as cash. If I walk into a store with cash up front I'll get a better deal than you will. It's called negotiating, and that doesn't happen when you just sign up for their deal.

Let's say you're buying \$2,000 worth of stuff. If you've got \$2,000 sitting in a savings account for 12 months making 4 percent, you're looking at about \$80. We're not talking about a bunch of money here. Do you think I can walk in and negotiate at least \$80 off the price? You bet I can!

Here's another problem. What if that company messes up on one little thing? What if they record a payment wrong and it ends up being late? They'll back charge you through the entire period at finance company rates, that's what. I'm talking 24 to 38 percent! And this is even if YOU do everything right and abide by all the terms.

Stay away from snakes, Bud, and you won't have to worry about being bitten!

— Dave

— Dave Ramsey is the best-selling author of *The Total Money Makeover*. He also is the host of *The Dave Ramsey Show* that airs at 6 p.m. daily on the Fox Business Channel. You can find tools to help with finances or previous columns at [Davesays.org](http://Davesays.org). For more financial advice, visit the Web site or call (888) 22-PEACE. Have a question for Dave? Send correspondence to [syndication@daveramsey.com](mailto:syndication@daveramsey.com) or write *Dave Says*, 1749 Mallory Lane, Brentwood, TN 37027

Have a news tip?

Call us!

337-4681

# Calendar

## Today

- Owyhee Sagehens meeting**  
1 p.m., Wilson Schoolhouse, Idaho state highway 78
- DivorceCare recovery support group**  
7 p.m., Mountain View Church of the Nazarene, 26515 Ustick Road, Wilder. (208) 337-3151

## Thursday

- Exercise class**  
11 a.m., free, Homedale Senior Citizens Center, 224 W. Idaho Ave. (208) 337-3020
- TOPS (Take Off Pounds Sensibly)**  
5:30 p.m. weigh-in, 7 p.m. meeting, First Presbyterian Church, 320 N. 6<sup>th</sup> St., Homedale. (208) 482-6893
- Homedale Rod and Gun Club meeting**  
7 p.m., Owyhee Lanes Restaurant, 18 N. 1<sup>st</sup> St. E., Homedale. (208) 463-4383
- AA meeting**  
8 p.m., Homedale Senior Citizens Center, 224 W. Idaho Ave.

## Friday

- Celebrate Recovery 12-step program**  
6 p.m., Mountain View Church of the Nazarene, 26515 Ustick Road, Wilder. (208) 337-3520 or (208) 337-3151

## Tuesday

- Exercise class**  
11 a.m., free, Homedale Senior Citizens Center, 224 W. Idaho Ave. (208) 337-3020
- Storytime for first- through third-graders**  
4:20 p.m., Lizard Butte Public Library, 111 3<sup>rd</sup> Ave. W., Marsing. (208) 896-4690
- Pure Word recovery meeting**  
7 p.m., Snake River Valley Fellowship, 20 E. Oregon Ave, Homedale. (208) 475-3733
- AA meeting**  
8 p.m., Homedale Senior Citizens Center, 224 W. Idaho Ave.

## Wednesday

- Homedale City Council meeting**  
6 p.m., City Hall, 31 W. Wyoming Ave. (208) 337-4641
- DivorceCare recovery support group**  
7 p.m., Mountain View Church of the Nazarene, 26515 Ustick Road, Wilder. (208) 337-3151
- Marsing City Council meeting**  
7 p.m., City Hall, 425 Main St. (208) 896-4122
- Grand View City Council meeting**  
7 p.m., City Hall, 425 Boise Ave. (208) 834-2700, Monday through Wednesday
- Owyhee Watershed Council meeting**  
7 p.m., University of Idaho Owyhee County Extension Office, 238 8<sup>th</sup> Ave. W., Marsing. (541) 372-5782

## Thursday, April 10

- El-Ada commodity distribution**  
11 a.m. to noon, Rimrock Senior Center, 525 Main St., Grand View. (208) 337-4812
- Exercise class**  
11 a.m., free, Homedale Senior Citizens Center, 224 W. Idaho Ave. (208) 337-3020
- Homedale Chamber of Commerce luncheon**  
noon, Owyhee Lanes Restaurant, 18 W. 1<sup>st</sup> St. (208) 337-3271
- Owyhee Garden Club meeting**  
1 p.m., University of Idaho Owyhee County Extension Office, 238 8<sup>th</sup> Ave. W., Marsing. (208) 896-5474 or (208) 896-4104
- TOPS (Take Off Pounds Sensibly)**  
5:30 p.m. weigh-in, 7 p.m. meeting, First Presbyterian Church, 320 N. 6<sup>th</sup> St., Homedale. (208) 482-6893
- Adrian school board meeting**  
7 p.m., Adrian School Library
- Owyhee County Fair Board meeting**  
8 p.m., county fairgrounds, Homedale. (208) 337-4575
- AA meeting**  
8 p.m., Homedale Senior Citizens Center, 224 W. Idaho Ave.
- Owyhee Conservation District board meeting**  
8 p.m., 250 N. Old Bruneau Highway, Marsing. (208) 896-4544

## Friday, April 11

- Celebrate Recovery 12-step program**  
6 p.m., Mountain View Church of the Nazarene, 26515 Ustick Road, Wilder. (208) 337-3520 or (208) 337-3151

## Monday, April 14

- Homedale School District Board of Trustees meeting**  
7 p.m., district office board room, 116 E. Owyhee Ave.
- Melba School District Board of Trustees meeting**  
4 p.m., district office board room, 600 Broadway Ave.

Submit information on upcoming fundraisers, meetings, reunions or community events to *The Owyhee Avalanche* by noon Fridays for inclusion in the calendar. Drop off press releases at the *Avalanche* office at 19 E. Idaho Ave., Homedale, mail them to P.O. Box 97, Homedale, ID 83628, fax them to (208) 337-4867 or e-mail them to [jbrowneditor@cablone.net](mailto:jbrowneditor@cablone.net). For more information on submissions, call (208) 337-4681.

Keep up with county events in the *Avalanche*

## BOWEN PARKER DAY

BOISE - NAMPA - HOMEDALE

- INVESTMENTS\* • RETIREMENT PLANNING\*
- ACCOUNTING • AUDITING • TAX SERVICES

Nampa	Homedale	Boise
Ron Bowen*, CPA	Mikeal Parker*, CPA	Terry Day*, CPA
624 16 <sup>th</sup> Avenue South	19 East Wyoming	1403 Broadway Avenue
P.O. Box 41	P.O. Box 905	Boise, ID 83706
Nampa, ID 83653	Homedale, ID 83628	(208) 344-7988
(208) 467-6900	(208) 337-3271	

“Serving Treasure Valley Individuals and Businesses since 1949”

Gavin S. Parker  
Investment Advisory Representative\*^

\*Securities offered through H.D. Vest Investment ServicesSM, Member SIPC ^Advisory services offered through H.D. Vest Advisory Services SM. Non-bank subsidiaries of Wells Fargo & Company.



# Former P&Z commissioner named to energy panel

County rancher  
allowed to graze  
Elephant Butte again

A former Owyhee County Planning and Zoning commissioner has been named the new chairman of the county’s energy task force.

The Board of Commissioners tabbed Sid Erwin to replace Joe Weatherby as energy committee chair during its March 24 meeting in Murphy. The commissioners also thanked Weatherby, himself a former P&Z commissioner, for his efforts in exploring energy options for the county while on the task force.

Weatherby chaired the committee while it devised the county’s energy plan — the first of its kind in Idaho — and also produced a two-day energy summit in Homedale.

In other commission news:

The commission also approved an agreement to allow grazing on property

purchased by the county on Elephant Butte. The land is designated as the future site of a county landfill. Rancher Ted Blackstock held grazing permits with the Bureau of Land Management, the land’s former owner. The commissioners voted to allow Blackstock to continue his lease of 52 animal units per month at the same price, \$1.35 per AUM. Blackstock will make annual lease payments to Owyhee County.

The board voted to award a contract to Shewey and Associates to perform an appraisal of the county’s hazardous waste disposal site operated by US Ecology Idaho, Inc. The appraisal of the site, located between Oreana and Grand View, will cost the county \$5,500.

The commissioners also voted to have vegetation growing around the county courthouse in Murphy removed, as it constitutes a fire hazard.

The commission also appointed developer Jerry Dickerson to the county’s Development Impact Committee, which

acts in an advisory role to the commission regarding county development fees.

During its March 17 meeting, the commissioners voted unanimously to send a letter to Sen. Larry Craig (R-Idaho) regarding the proposal by Owen Ornsdorf of Junayo Ranches to construct five small earthen dams on BLM land. The dams would create ponds within the BLM’s Macks Creek Cooperative Wildlife Habitat-Farming Area and the nearby Little Alkali Creek drainage. The project’s purpose is to create wildlife habitat in the area.

The letter is intended to inform Senator Craig of the county’s opposition to the project. The commissioners wish to express their concern that the Senator might be unaware of the potential negative impact on residents in the vicinity of the proposed project, and that the Senator appears to be in favor of a project that some constituents do not support.

The project is located within the BLM’s Tyson fenced federal range grazing allotment. A BLM report on the project

states that, among other impacts, the project has “the potential to permanently alter the natural hydrology and stream functions” in the area, and that soluble salt concentrations due to the continued wetting and drying of the proposed ponds will eventually negatively impact vegetation in the area and could result in the salinization of pastures irrigated with water from the ponds.

The commission also opened the one bid received on pre-cast bridges at Lone Tree and Whiskey Creek on Juniper Mountain Road. The bid, from Amcor Oldcastle Precast for \$74,578, was considerably higher than the cost anticipated by the board, according to commission chairman Jerry Hoagland. Hoagland said that because the bid exceeded the board’s cost expectations, the project was tabled, and the board is re-evaluating the county’s options for completing the project. Hoagland added that the current bridges are fully functional, and there is no danger to anyone crossing them.

— RTH

# Emmett contractor builds Homedale LDS pavilion



**Visit our new Design Center**  
**before building or remodeling your home!**

**We sell carpet, blinds, lighting, windows, laminate floors, tile, granite, cabinets...**  
**We can help with just about everything you need for your next project!**

**Free Estimates • Idaho Owned**

**Franklin**  
BUILDING SUPPLY  
SERVICE IS OUR SPECIALTY

4523 Cleveland Blvd.  
Caldwell  
**454-8626**

**Homedale church adds pavilion**

*Left: Talon Borge, left, and Blair Oram of Emmett-based Caliber Construction trim plywood Friday during construction of a picnic pavilion at the Homedale LDS church on West Idaho Avenue. Above: Oram, who owns Caliber Construction, said the 36-foot-by-64-foot shelter should be completed sometime in April. Below: One week of progress is reflected with a facade for the pavilion.*





**SMARTLIC**  
**250 lb. Tubs**  
Minlic - IGR **\$100**  
12% Magblock **\$68**

**4" Siphon Tubes**  
72" - \$63 • 96" - \$73

**PSC**  
Producers Supply

3441 Hwy 95 • Homedale  
208-337-5706



# County clerk prepares for primary

Owyhee County Clerk Charlotte Sherburn is urging folks to register early for the May 27 primary elections.

The last day to register for the primary election is May 2. Registration will be available on Election Day, but prospective voters must fill out a registration card and provide proof of residency at their respective polling places.

Sherburn also urged absentee voting.

“Having the ballot before the voter many weeks before the actual election day will provide them the opportunity to familiarize themselves with the names of all the candidates for all of the offices, and research the platforms of those they are not familiar with,” Sherburn said.

She also said absentee ballots give voters the opportunity to make their choices in the comfort of their own homes and take their time filling out the ballot. Absentee voting also eliminates the need to travel to polling locations and eases lines at voting precincts, not to mention saves money with fuel prices rising weekly, she said.

Voters have until 5 p.m. May 21 to request an absentee ballot by mail. Sherburn said that after that date the clerk’s office cannot guarantee voters will receive a ballot in ample time to vote it and return it to the clerk’s office by the close of the polls at 8 p.m. on May 27. Walk-in absentee ballots will be available at the clerk’s office after the May 21 deadline, but voters will be required to fill out the ballot in the office.

The deadline to obtain an absentee ballot in person is the day before the primary and general elections (May 26 and Nov. 3, respectively).

The clerk’s office is open in Murphy from 8:30 a.m. to 5 p.m. Monday through Friday. Sherburn said that the clerk’s office even will be open for half a day on Memorial Day because it falls on May 26, the eve of the May 27 election. The office will be open from 8:30 a.m. to noon on May 26 for absentee voting.

Sherburn said absentee ballots will hit the mail this week. The ballots cannot be turned in at voting precincts on Election Day. Absentee ballots that are returned to polling places will be invalidated.

Those applying for an absentee ballot must use their full legal name and list their physical address and mailing address, if applicable. Those requesting an

absentee ballot in the primary will automatically receive a general election ballot as long as they check the appropriate box on the request form, Sherburn said.

The Pleasant Valley, Riddle and Three Creek voting precincts are designated as mail ballot precincts, and residents in those areas will receive ballots for the primary and general elections 24 days prior to the dates of each election. If residents of voting age in those three precincts have not registered prior to May 2, they will be required to come to the courthouse in Murphy on Election Day and register if they want to participate in the election process.

Voter registration forms and request for absentee ballot forms are available at [www.owyheecounty.net](http://www.owyheecounty.net) through a link to the Secretary of State’s Web site. Forms can be downloaded, filled out and mailed to the Owyhee County Clerk, P.O. Box 128, Murphy, ID 83650.

For more information, contact the clerk’s office at (208) 495-2421 or (208) 495-2806.

Find out  
*What’s happening*  
Read Calendar each week  
in the Avalanche

# Commissioner cited after non-injury accident on Idaho 78

Owyhee County commissioner Dick Freund was cited for a solid-line passing infraction March 21 in an incident that involved an auto accident, according to the Owyhee County Sheriff’s Office and court records.

The accident occurred near milepost 25 on Idaho highway 78.

Sheriff’s Det. Jim Bish described the incident as “a very low-speed crash,” and said that no one was injured and there was very little property damage as a result of the accident. Bish said the accident occurred when a vehicle ahead of Freund turned left as Freund attempted to pass.

“Freund was passing a vehicle



Dick Freund

that was allegedly signaling to turn right,” Bish said. “As he passed, the vehicle turned left in front of him.”

According to Bish, the other driver involved in the crash claimed that a left turn was being signaled, while Freund claimed the vehicle was signaling for a right turn.

“It’s a case of he said, she said,” Bish said. “Who is right? We don’t know.”

The section of road where the accident took place is in a no passing zone, and Freund was assessed a fine of \$33.50 and court costs of \$41.50 for a total of \$75 for the infraction.

— RTH

Read all about it  
in the Avalanche!

## Grab a Bite Tonight!

Here’s a list of monthly specials from area restaurants.  
Watch for this Dining Guide the first issue of the Owyhee Avalanche each month.

**\$5** Regular Foot Long Sandwiches  
*All Day! (Limited Time)*

Homedale • 321 E. Idaho • 337-5777  
FAX IN YOUR ORDER - 337-3355  
Hours: Mon-Sat: 7:00 am - 9:30 pm  
Sunday 9:00 am - 8:00 pm • Breakfast Daily 'til 11:00 am

Call for our Monthly Specials  
**All You Can Eat Pizza & Salad Lunch Buffet Weekdays 11-2**  
*We Deliver! 337-6222*

138 East Idaho • Homedale

**April happy hour! 3 - 6 pm 25% off any drink**

COFFEE  
ICED ESPRESSO  
FRAPPES, BREZZAS  
AND ITALIAN SODAS

**New to Moxie!! Mushroom Angus Burger**  
Saucy Caramelized Onions, Mushrooms & Melted Swiss Cheese atop a juicy Angus Patty Served with Potato Salad or Chips. Only \$3.95 through April

**OPEN FOR BREAKFAST, LUNCH AND DINNER**  
PASTRIES, SALADS, SOUPS, SANDWICHES, WRAPS, BURGERS, CALZONES, STROMBOLI AND PASTA.  
Your Locally Owned Homedale Moxie Java Bistro  
337-5566 [www.moxiejava.com](http://www.moxiejava.com)

**April Special**  
**\$1<sup>00</sup> OFF Club Wrap in April**  
*Wednesdays are Senior Day! Half Price Menu for senior citizens*

**Essence of Life Deli** Open Mon, Tues & Fri 9 am - 8 pm  
Wed, Thurs 9 am - 6 pm  
Saturday 10 am - 4 pm  
111 Main Street • Marsing, Idaho • 896-7001

**April Special**  
**Large 16" Pepperoni Pizza for \$12**  
(no substitutions)  
Dine in or Take out  
12 Sandbar Ave., Marsing  
Phone 208-896-5055  
Where friends and good food meet

**April Special**  
**Order any 2 Large Pizzas & get a free movie rental!**  
Daily Lunch & Dinner Specials • Check out our Menu!

**Matteson's Wilder**  
482-9210  
Pizza - Tacos - Subs - Salads - Appetizers - Breakfast & More!

Starting May 1st, The Blue Canoe will be serving dinner on Wednesday & Thursdays from 4pm - 9pm. Also, come join in the fun in the back yard, Horeshoes, volleyball & cold beer! Karaoke every Saturday Night

**Bring this ad in for 1/2 OFF a second meal**  
Wednesday & Thursday Nights Only

**The Blue Canoe**  
Highway 78 • 495-2269 or 859-6346

**"Treasure Valley's Best Prime Rib"** Friday & Saturday Nights  
Complete dinner with homemade soup or salad, Savory Red Roasted potatoes, veggie and a homemade whole wheat dinner roll all for:  
10 oz \$14.99 • 14 oz \$17.99 • Add a skewer of 5 Jumbo Shrimp for only \$2.99

**Owyhee Lanes and Restaurant** 18 W. 1st St., Homedale  
337-3757

**This guide is also available on the web at [www.theowyheeavalanche.com](http://www.theowyheeavalanche.com)**  
**call 337-4681 to advertise!**



## Candidates file for Bruneau library district election

Only two people filed to join the race for two open seats on the Bruneau Valley Library District board of directors by the filing deadline on March 21.

Write-in candidates for a two-year term and a five-year term have until May 2 to file paperwork with library district clerk Ginny Roeder.

Liz Ogg, who was appointed to

fill a vacancy last year, has registered to run for the two-year term, while Denise Stewart was the only person to file candidacy papers for the five-year term.

If no one else files for the election by 5 p.m. on May 2, no election will be held.

The election is scheduled for May 27 at the library, 32073 Ruth St., in Bruneau.

## Burning call lands man in county jail

Alerted by a call of something burning on Idaho highway 19, law enforcement authorities arrested Martin Guy Miller west of Homedale on numerous charges, including felony possession of burglary tools.

Homedale Police Chief Jeff Eidemiller discovered Miller, 49, allegedly trying to burn plastic coating off copper wire when he responded to a call of something burning.

Owyhee County Sheriff's personnel also responded and took Miller into custody on the burglary tools charge as well as suspicion of petit theft by possession, carrying a concealed weapon and on a warrant from the probation

and parole department.

Owyhee County Sheriff's Det. Jim Bish said Miller's arrest was not related to the arrests of two Owyhee County adults and a juvenile Wednesday on suspicion of stealing irrigation siphon tubing and wiring.

Miller was booked into Owyhee County Jail in Murphy. Bish said he was later transported by Marsing Ambulance to Mercy Medical Center in Nampa after complaining of dizziness, swollen arms, hands and feet, according to dispatch records.

Bish said Canyon County authorities took custody of Miller because he is a suspect in numerous thefts in Canyon County.



Martin Miller



### LaDon's Corner

#### Polishing Gold

Have you ever wondered how our goldsmith is able to polish your ring to that brilliant **"new ring"** look? The secret is in his combination and sequence of cleaning and buffing. One of the ways we clean our rings is by using a mixture of ammonia and water and, then, holding the ring beneath a high pressure steam nozzle for its final bath. When we polish a ring to remove scratches and blemishes we use clay rouge on a fly wheel made of cotton. These polishing pads come in variety different textures and can be switched by the polisher depending on what he wishes to accomplish.

When we polish gold using a hand held polisher our bit-heads come in a variety of surface texture from course to extra fine. For example the final polish bit-head is made of a soft silicone rubber compound.

It is important for you to know that a skilled goldsmith can polish a flaw or weld spot to the point of blending it beyond human vision, meaning when you have your ring sized you should not be able to see where the work was done.

At **LaDon's Fine Jewelry** we always clean and polish your rings in your presence, free of charge, and it only takes a few minutes.

**LaDon Reames, owner of LaDon's Fine Jewelry** in the WinCo/ShopKo Center has been a Nampa jeweler for thirty-three years. She is a certified diamondologist and gemologist. She can be reached at

**208-461-0677**

On the web @ [www.Ladonsfinejewelry.com](http://www.Ladonsfinejewelry.com)

# Legislation could limit county windfall from IEC

### New state law designed to attract French firm also could apply to \$4.5 billion nuclear plant

A new law may limit the amount of property tax revenue Owyhee County will see if the Idaho Energy Complex nuclear power plant.

House Bill 562, which was signed into law by Idaho Gov. C.L. "Butch" Otter on March 24, caps the property tax obligation at \$400 million for any business that invests \$1 billion or more in new construction.

Although the bill was passed to create incentive to convince Areva — a French nuclear power company — to build a uranium enrichment plant in eastern Idaho, the law also seemingly would benefit IEC. Developers of the 1,600-megawatt power plant proposed for Bruneau have put the value of the project at \$4.5 billion, which would qualify under the new law.

Owyhee County's delegation in the state House of Representatives was split on the bill. State Sen. Tom Gannon (R-Buhl) missed the Senate vote on March 17 with an excused absence.

District 23A Rep. Jim Patrick (R-Twin Falls) voted against the bill in the House's 41-27-2 vote on March 5 that sent the bill to the Senate. District 23B Rep. Bert Brackett (R-Rogerson) was in favor.

"Part of my reasoning also was the type of business Areva was in," he said. "Processing radioactive material over the aquifer didn't seem really smart. But I was assured that it is safe."

While most laws passed during the 2008 legislative session won't go into effect until July 1, an "emergency" clause in HB 562 made its governance retroactive to the first of the year.

Although he voted in opposition, Patrick said that even a \$400 million property tax windfall would be a boon for a county.

"If you get it in a community, \$400 million would be a good tax base," he said. "(The exemption) is not going to hurt a community because it's still a good tax base."

And, at least in the case of a power-producing company as IEC is proposed to be, Patrick said there are other ways to get revenue from the plant, such as power generation fees that would be paid both to the state and Owyhee County.

Marsing resident Joe Weatherby, who as chair of the Owyhee County Energy Committee helped draft the county's Energy Plan, opposed the bill.

The Owyhee County Board of Commissioners appointed Sid Erwin to replace Weatherby as chair of the energy committee at its March 24 meeting.

Weatherby said the tax break that IEC apparently would receive goes against the company's assertion that it would help pay for increased county infrastructure needs through its tax bills.

"It's disingenuous to say on the one hand, 'Yeah, we're going to do all these wonderful things for the county,' and on the other go to the Legislature and prevent that from happening," Weatherby said.

Weatherby said it was easy to draw a connection between the bill's primary beneficiary — Areva — and IEC, whose chief

*'If you get it in a community, \$400 million would be a good tax base. (The exemption) is not going to hurt a community because it's still a good tax base.'*

— Rep. Jim Patrick  
R-Twin Falls

executive is Don Gillispie.

"I cannot say that Don Gillispie is there, but I find it hard to believe that Areva came and arranged this House Bill 562 without Don Gillispie's involvement and sidestepped all the taxes for the first seven to 10 years," Weatherby said.

Areva designs and builds the "dry-cooling" reactor that IEC has proposed to use in its nuclear power plant.

Idaho Energy Complex, through spokesman Martin Johncox, declined a request for comment from The Owyhee Avalanche.

The law requires that the property owner invest \$1 billion within the first seven years of obtaining a building permit. IEC has said it will submit a combined operating license application with the federal Nuclear Regulatory Commission later this year with an eye toward starting construction in 2011. The total value of the investment mustn't come solely from construction, according to the law.

Drawing a parallel to the aborted MidAmerican Energy Co.'s venture to build a nuclear plant in Payette, Patrick voice skepticism about the viability of the IEC project.

"As far as the plant in Owyhee County, this company doesn't have the same resources, and I just have a feeling that maybe it's not going to happen," Patrick said.

— JPB

## When you're looking for a home loan, it's nice to have a Loan Officer close to home.



**Doug Cook**  
Loan Officer

C: (208) 989-0644  
O: (208) 337-5770  
F: (208) 337-5787  
[dcook@golfsavingsbank.com](mailto:dcook@golfsavingsbank.com)

Since 1981 Golf Savings Bank has ranked among the top mortgage lending companies in the country. Our Loan Officers are Bankers and Brokers, and can help you find the right loan for building, buying or refinancing your home.

Contact Owyhee County resident Doug Cook and get pre-approved for your loan now.

**Golf Savings Bank**  
*Everything you'd never expect from a mortgage lender.*  
[www.golfsavingsbank.com](http://www.golfsavingsbank.com)  
A SUBSIDIARY OF STERLING FINANCIAL CORP.

**Homedale Branch Office • 114 W Idaho Ave**











# School district employees honored for caring nature

Most recent Homedale award recipients work to build stronger students, community

The Homedale School District Board of Trustees honored two employees with awards of excellence at its March meeting. Bette Uda and Lori Conant were awarded plaques after presentations from two of the school district’s principals.

Uda, who works in the Homedale Middle School kitchen, has a long history with the school district. She was a driving force behind the creation of the International Smorgasbord 47 years ago.

Middle school principal Luci Asumendi-Mereness told board members that Uda helped launch the Smorgasbord as a way to buy band uniforms.

“Of course, it has grown far more than anyone could have predicted, and it fits perfectly with how Bette has lived her life — with the ability to bring people together for the greater good,” Asumendi-Mereness said.

Uda also served as a member of the Homedale City Council and has taken on regular recycling efforts to raise money for other community interests.

“Bette, you have championed so many causes and have carved a legacy in this community,” Asumendi-Mereness said before the plaque presentation. “You’ve been a constant partner to a community you dearly love. The debt we owe you can never be paid. The magnificence of your generosity and the multitude of ways you’ve shared your generosity can never be equaled.”

Asumendi-Mereness hinted that a mere plaque was not enough to honor the woman who had devoted her life to making the community around her better.

“Until a building, a library, store or street bears your name, this award as Employee of the Month for Homedale Middle School will have to do,” Asumendi-Mereness said.



Lori Conant



Bette Uda

Conant was presented by another first-year principal, Yvonne Ihli of Homedale Elementary. She coordinates a program at the elementary school that Ihli characterizes as a tool of intervention to help students who need help with reading.

A Homedale native who put three children through the town’s school district and now has grandchildren in the district’s schools, Conant has worked at the elementary school for 17 years, and Ihli summed up her impact with one story.

“A little girl came into my office a few weeks ago and was crying,” Ihli said. “After asking her what was wrong, she replied that she had graduated from Mrs. Conant’s reading program.”

“This young student was now where she needed to be in reading and was ready to join the other students.”

Ihli said the story was a tribute to Conant’s daily performance at the school.

“Lori offers nothing short of excellence to those students she supports in reading,” Ihli said. “Classroom teachers view her as a valuable resource, and she works closely with them to determine the best ways to build skills and confidence in struggling readers.”

“Lori Conant truly cares about the students at Homedale Elementary. She is an asset to our school and our community.”



Still plenty of snow in Owyhees  
Snow accumulation remains at 57 inches at the South Mountain weather station, which is located near this old cabin in the Owyhees.

## Water report

The Bureau of Reclamation Web site showed that, as of Monday afternoon, Owyhee Reservoir was 44 percent full and that water was flowing in the Owyhee River at Rome, Ore. at a rate of 1,790 cubic feet per second. The reservoir held 315,110 acre-feet of water.

The following statistics were gathered from the National Resources Conservation Service Web site at 2:30 p.m. Monday (Year-to-date precipitation is measured from Oct. 1 to Sept. 30):

Date	Reynolds Creek		Temperatures		
	Year-to-Date Precipitation	Max.	Min.	Avg.	
03/25	13.6	43	34	37	
03/26	13.6	38	29	33	
03/27	13.9	35	23	29	
03/28	13.9	29	15	21	
03/29	14.0	39	18	27	
03/30	14.0	32	14	21	
03/31	14.1	32	17	22	

Current snow depth is 13 inches, with a snow water equivalent of 5 inches.

Date	South Mountain		Temperatures		
	Year-to-Date Precipitation	Max.	Min.	Avg.	
03/25	25.1	48	34	39	
03/26	25.4	42	31	35	
03/27	25.9	39	21	30	
03/28	25.9	36	15	22	
03/29	26.5	40	18	29	
03/30	26.5	35	11	22	
03/31	26.6	36	15	23	

Current snow depth is 57 inches, with a snow water equivalent of 22 inches.

Date	Mud Flat		Temperatures		
	Year-to-Date Precipitation	Max.	Min.	Avg.	
03/25	12.9	55	36	43	
03/26	12.9	51	35	40	
03/27	13.1	46	26	36	
03/28	13.1	40	17	26	
03/29	13.2	49	20	34	
03/30	13.2	38	17	28	
03/31	13.2	44	18	29	

Current snow depth is 25 inches, with a snow water equivalent of 9 inches.

# Drivers ed fees on the rise

Homedale trustees OK 16.9 percent hike

An increase in drivers education fees will help Homedale School District accommodate more students this year, according to the district’s superintendent.

School trustees approved a 16.9 percent increase in fees during its March meeting. Parents now will pay \$152 for the course, an increase of \$22.

The new price doesn’t include a \$50 fee for classroom training provided online by the Idaho Digital Learning Academy (IDLA).

Superintendent Tim Rosandick pointed out that the school isn’t obligated to offer drivers ed, and in fact before Homedale Middle School principal Luci Asumendi-Mereness assumed the instructor role last summer, the district had been without a program.

Students were forced to take private lessons from schools in Canyon County and elsewhere.

Rosandick said that tuition for the private instructors still is much higher than the combined \$202 price tag for the Homedale/

IDLA drivers education program, and that the district’s goal was to accommodate as many students as possible to eliminate the burden of finding a private instructor.

“We tried to maximize the number of kids who could get drivers education this year, and design the budget around that,” Rosandick said.

Asumendi-Mereness, who accepted the HMS chief’s job last summer, still is involved with drivers ed. But other responsibilities have diminished the time she has to devote, so a second instructor — Gini Carrow — has been hired. Carrow currently is undergoing the certification process and will be on board in mid-August, Rosandick said.

Rosandick said the online portion of the drivers ed classes already had begun, and that the school district has made arrangements to have its computer lab open during non-school hours to provide Internet access to those students who may not have it at home.

In other district news:

Contracts for the 2008-09 school year were approved for middle school teachers Larry Falcon, Kelly Schamber, Ed Lee,

Mark Boothby and Taci Morris. District music instructor Karla Kachelmier also had her contract renewed.

In athletics, coaching contracts were approved for Homedale varsity boys basketball coach Kenny Thomas, Homedale varsity girls basketball coach Jeremy Chamberlain and Trojans wrestling coach Toby Johnson.

David Correa, the only coach the Homedale boys soccer program has known in its four years of existence, was reassigned to coach the girls team. He takes over for Kirt Stragey, who coached the Trojans girls for only one season.

No replacement for Correa on the boys team has been named officially.

During a special meeting Thursday night, school trustees confirmed the hiring of Laura Moylan as the district’s new curriculum/federal programs director. She replaces Glenda Eubanks, who tendered her resignation during February’s board meeting.

Eubanks’ resignation becomes effective at the end of the school year, according to Rosandick.

— JPB

### Rapha Therapeutic Massage

Specializing in Pain & Injury Massage



**Lose the Stress!**  
Refresh & Revitalize with a Massage!  
**Receive \$10.00 off our 60 or 90 minute massage when you refer a friend!**  
Mandy — 208.919.3782 • Stacy — 208.695.7228  
 [www.raphamassage.com](http://www.raphamassage.com)   
**6 West Owyhee • Homedale (by appointment only)**



Wilson Butte 4-H news

Members of the Wilson Butte 4-H club are already rolling along with meetings and projects. Newly elected officers took the helm in January, including president Hailey Brisbin, vice-president Jackie Phillips, secretary Brittany Roberts, treasurer Wade Bass and sergeant of arms Morgan Monson. Plans and direction of clubs activities were laid out. Beef projects were weighed in and all went well. Activity books have been received and work days are planned. Members attended the beef field day held in Marsing and learned about marbling, grades and cuts of meats.

A meeting/pizza party was held at Idaho pizza. Everyone enjoyed 14 large pizzas. Fundraising plans are in full swing, and members are putting up flyers and collecting raffle items and prizes for the fifth annual Cowboy Trail ride & poker run, which will be held April 27 at Blackstock Ranch. Businesses have donated some great items, including feed, quilts, a ton of hay, certificates and numerous horse tack items. We are hoping for good weather and a great time. Project demonstrations will follow. A busy year is planned and members are already looking forward to the Owyhee County Fair in August.

Homedale FFA  
Officers reflect on benefits of organization

FFA has been a real inspiration to me over the past four years. At the beginning, I did not know what to expect and didn't plan on participating in as many events as I do. I really wasn't expecting to become an officer, and now I am chapter president. Through the different events, I have learned a lot and met a bunch of new people. I found new talents such as copper plumbing. At the beginning of my sophomore year, I didn't know anything about copper plumbing and by the time state competitions came I was a state champion.

I have also developed my speaking abilities. I can give a speech in front of more than two people and still feel confident. I have developed this through oral reasons during livestock judging. Overall, FFA has been a great experience, and I will never forget it.

— Mathew Hansen, chapter president

I started out my high school career shy and unconfident. Now, after four years of FFA, I don't even recognize my old self. I have found my ideal career path, secured a full-ride scholarship and made different types of career development events — everything from job interview to range management to horse/livestock judging to public speaking.

I have been a state champion as well as claiming numerous top-five finishes in state competition in various events. FFA has made me feel confident in my own abilities, and I have become a well-rounded individual. Our chapter advisor, Lori Harrison, has encouraged all of us to reach our ultimate potential, and I know I will. I will carry my FFA memories with me for the rest of my life.

— Kortney Bahem, chapter vice-president



Mathew Hansen



Kortney Bahem

**Public Notice of Intent  
To Propose Or Promulgate  
New Or Changed Agency Rules**

The following agencies of the state of Idaho have published the complete text and all related, pertinent information concerning their intent to change or make the following rules in the new issue of the state Administrative Bulletin.

*(Temp & Prop) indicates the rule is both temporary and proposed.  
\*\* Indicates that a public hearing has been scheduled.*

**IDAPA 58 – DEPARTMENT OF ENVIRONMENTAL QUALITY  
1410 N. Hilton, Boise, ID 83706-1255**

**\*\*58-0101-0801, Rules for the Control of Air Pollution in Idaho** (Temp & Prop). Implements the provisions of IIB 557 for the open burning of crop residue to be administered by the IDEQ and repeals the Smoke Management and Crop Residue Disposal Act previously administered by the ISDA; prohibits field burning if air quality levels exceed or are expected to exceed 75% of any national ambient air quality standard; requires that farmers obtain a notice of approval to burn, provide notice of proposed burns, and pay a registration fee based upon the number of acres to be burned and ensures that the public has ready access to this information; IDEQ is required to conduct ongoing and annual reviews of the program, develop a revised State Implementation Plan and get approval of the plan by the USEPA before burning can resume in Idaho. Comment by: 5/2/08.

**NEGOTIATED RULEMAKING MEETINGS  
ARE BEING HELD ON THE FOLLOWING:**

**DEPARTMENT OF HEALTH AND WELFARE**  
**16-0613-0801**, Rules Governing Emergency Assistance for Families and Children  
**16-0737-0801**, Children's Mental Health Services (New Chapter)

**DEPARTMENT OF ENVIRONMENTAL QUALITY**  
**58-0108-0801**, Idaho Rules for Public Drinking Water Systems  
**58-0111-0801**, Ground Water Quality Rule  
**58-0116-0801**, Wastewater Rules  
**58-0124-0801**, Standards and Procedures for Application of Risk Based Corrective Action at Chemical Release Sites

**PUBLIC HEARINGS HAVE BEEN  
SCHEDULED FOR THE FOLLOWING:**

**DEPARTMENT OF HEALTH AND WELFARE**  
**16-0701-0801**, Behavioral Health Fee Schedules  
**16-0710-0801**, Behavioral Health Development Grants  
**16-0717-0801**, Alcohol and Substance Use Disorder Services  
**16-0733-0801**, Adult Mental Health Services

**DEPARTMENT OF ENVIRONMENTAL QUALITY**  
**58-0000-0805**, Proposed Revision to the Idaho State Implementation Plan, Enactment of Section 39-114, Idaho Code (Comment period extended to 5/2/08)

Please refer to the Idaho Administrative Bulletin, April 2, 2008, Volume 08-4 for notices and text of all rulemakings, public hearing schedules, Governor's executive orders, and agency contact information.

**Issues of the Idaho Administrative Bulletin  
can be viewed at the county law library or online.**

To view the Bulletin or Code or for information on purchasing the Bulletin and other rules publications, visit our website at [www.adm.idaho.gov/adminrules/](http://www.adm.idaho.gov/adminrules/) or call (208) 332-1820 or write the Dept. of Administration, Office of Administrative Rules, 650 W. State St., Room 100, Boise, ID 83720-0306.



**Firemen deal with winds**  
*H o m e d a l e Fire Department crewmembers mop up after a minor brush fire west of town. The flames whipped up in windy conditions.*

Marsing Boy Scouts hold auction, dinner

Boy Scout Troop 412 and youth group will hold a fundraiser dinner and auction April 26 in Marsing. The dinner begins at 5:30 p.m., with the bidding for the silent and live auctions getting under way at 7 p.m. The event takes place at the Marsing LDS Church. Dinner is by donation, and there will be children's entertainment. For more information or to make reservations, e-mail [deosio@frontiernet.net](mailto:deosio@frontiernet.net) or call 896-5574 or 794-3279.

April OWC meeting nixed

The Owyhee Watershed Council meeting scheduled for next Wednesday has been canceled. The group's next meeting is scheduled for May 14 at 7 p.m. at the University of Idaho's Owyhee County Extension office, 238 8<sup>th</sup> Ave. W. in Marsing. For more information, call the extension office at 896-4104.

**We're Branching Out!**



**We're extending our reach, so we can better serve our customers' heating and cooling needs. Now more homeowners can expect the quick response, caring service and reasonable rates our customers have come to expect.**

**Newly Expanded Service Area!**  
**HOMEDALE • MARSING • PARMA**

***\$30 Off Any Service Call***

Offer valid with this ad only. Not valid with other offers or prior services.  
Limit 1 coupon per service call

**Furnace Inspections • Sales & Repairs  
Emergency Service Available • Free Estimates  
GAS • ELECTRIC • OIL • HEAT PUMPS**

**AIR COMFORT**  
**820 E. CLEVELAND BLVD • CALDWELL • 459-7463**

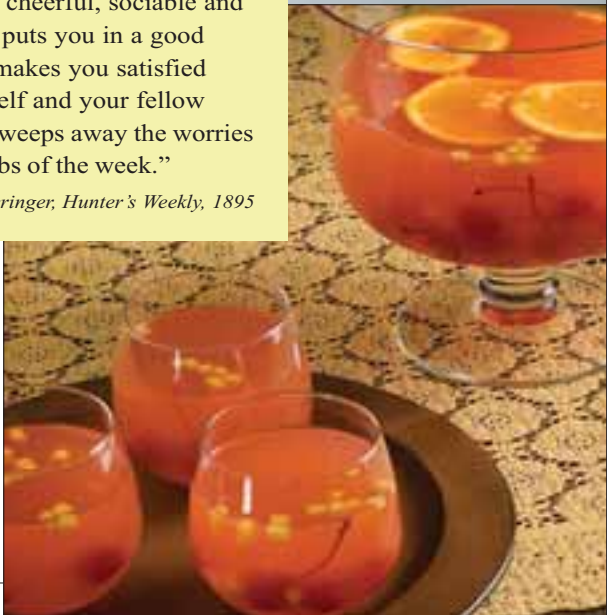
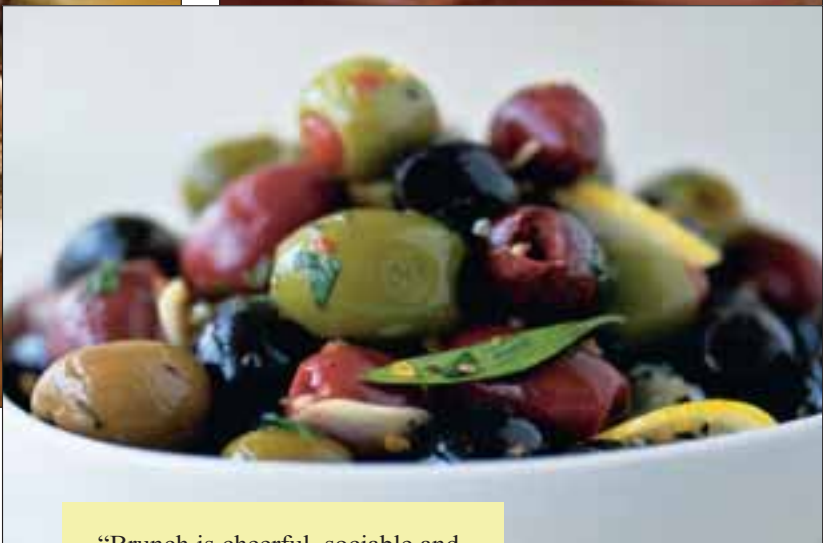
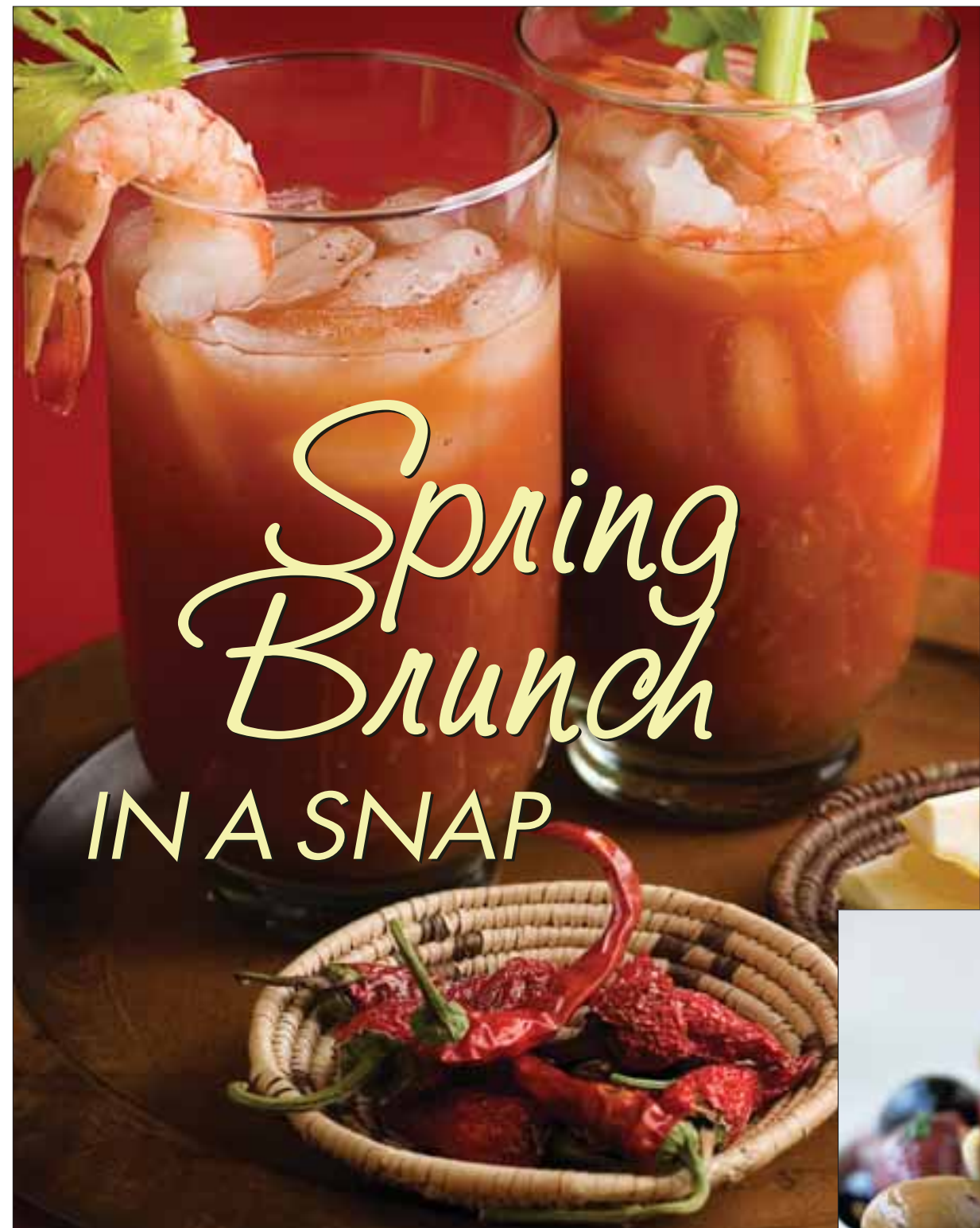
**Rubber Stamps**

*Made to order*

**The Owyhee Avalanche**  
*337-4681*

Read all about it  
in the Avalanche!





FAMILY FEATURES

Spring is the perfect time for a lively brunch with friends and family. Light dishes packed with bright flavors can be paired with refreshing cocktails to make a delicious menu. With a few key ingredients, putting together a brunch can be easy.

Start off with marinated olives — savory little bites of wow that few guests will be able to resist. Lindsay Olives offers a broad variety of olives, so you can experiment with different flavors.

As a main dish, serve up an elegant frittata. A frittata is a firm Italian omelet that can be served warm or at room temperature. Mixing herbs into the eggs makes every bite taste like spring. If finding and storing fresh herbs is a challenge, try Gourmet Garden squeezable herbs and spices, which are ready to use for up to three months and can be found in the fresh produce section of most grocery stores.

Simple drinks that complement the food flavors are a must. Ready-to-serve margaritas like Jose Cuervo Golden Margarita are a convenient way to entertain with style. They can also serve as a great base for creating delicious new cocktails simply by adding fresh ingredients.

These easy recipes can be made ahead of time, so all you have to do on brunch day is sit back with friends and enjoy.

**Brunchology**  
*The Study of Brunch*

**Herbology**

- Herbs and spices are a good source of antioxidants.
- Italian seasonings are usually a mixture of herbs like basil, thyme, parsley, oregano and rosemary.
- Gourmet Garden squeezable herbs and spices have no additives or preservatives.
- For more recipes, visit [www.gourmetgarden.com](http://www.gourmetgarden.com).

**Drink Mixology**

- The Bloody Mary used to be made with vodka, but today can be made with gin, rum or even tequila.
- Sangria is a Spanish punch traditionally made with wine and fruit. Jose Cuervo Golden Margarita gives sangria a whole new twist with its blend of rich, orange Grand Marnier and premium Jose Cuervo Gold Tequila.
- Whenever you're enjoying cocktails, please remember to drink responsibly.
- Find out more about easy entertaining with restaurant quality margaritas at [www.cuervo.com](http://www.cuervo.com).

**Olive-ology**

- Black ripe olives are milder in flavor than their cousins, the Spanish green and the Greek Kalamata.
- Olives have between 4 and 7 calories each, depending on the size.
- Flavorful olives pair well with robust wines.
- Find a handy "Olives 101" chart at [www.lindsayolives.com](http://www.lindsayolives.com) to help pick just the right ones.

“Brunch is cheerful, sociable and inciting. It puts you in a good temper, it makes you satisfied with yourself and your fellow beings; it sweeps away the worries and cobwebs of the week.”  
— Guy Beringer, *Hunter's Weekly*, 1895

**Bloody Maria**  
*Serves 4*

- 1 bottle Jose Cuervo's Authentic Margarita Minis
- 1/3 cup Jose Cuervo Clásico
- 3 cups tomato juice
- 2 teaspoons Worcestershire sauce
- 2 teaspoons hot sauce
- 1 teaspoon fresh ground pepper
- 1 tablespoon prepared horseradish
- Garnish: 4 celery sticks and 4 large cooked shrimp

Combine all ingredients in a large pitcher and stir. Pour into large highball glasses filled with ice, and garnish.

**Mediterranean White Bean Salad**  
*Serves 4*

- 1 tablespoon extra virgin olive oil
- 2 cans (15 ounces) cannellini beans, rinsed and drained
- 1/3 cup Lindsay Kalamata Pitted Olives, coarsely chopped
- 1/2 teaspoon Gourmet Garden Squeezable Garlic
- 1 tablespoon Gourmet Garden Squeezable Oregano
- 1 tablespoon lemon juice

Heat oil in medium-sized sauté pan over medium-low heat. Add beans and olives to pan, followed by garlic and oregano. Mix well and remove from heat immediately. Toss with lemon juice and serve warm or at room temperature.

**Tomato Olive Frittata**  
*Serves 4 to 6*

- 6 large eggs
- 1 tablespoon flour
- 1/2 teaspoon ground black pepper
- 1 1/2 teaspoons Gourmet Garden Italian Seasoning
- 2 cups shredded Fontina, cheddar or Monterey Jack cheese
- 1 can (3.8 ounces) Lindsay Sliced Ripe Olives, drained
- 1/2 cup thinly sliced green onion
- 1/2 cup chopped, seeded fresh tomato
- 1/3 cup thin strips Canadian bacon or lean ham

Preheat oven to 350°F. In medium bowl, whisk one egg with flour until blended. Whisk in 5 eggs, pepper and Italian seasoning. Stir in remaining ingredients. Spread in oiled 11x7-inch baking pan or dish. Bake 22 to 24 minutes until golden and set. Slice and serve.

**Marinated Olives**  
*Makes 1 dozen appetizers, 2 1/2 cups olives*

- 1 can (7.75 ounces) Lindsay Ripe Pitted Olives, drained
- 1 jar (5.75 ounces) Lindsay Spanish Green Olives, drained
- 1/4 cup olive oil
- 1 tablespoon Gourmet Garden Italian Seasoning
- 1/2 teaspoon Gourmet Garden Squeezable Garlic
- 1/2 teaspoon Gourmet Garden Squeezable Chili Pepper
- 1 tablespoon lemon juice

In a jar with tight fitting lid, combine all ingredients. Cover; shake to coat. Refrigerate at least 2 hours or up to 10 days before serving. Serve at room temperature, with wooden picks, as an appetizer; or serve over lettuce leaves and sliced tomatoes as a salad.

**Tequila Sunrise Sangria**  
*Serves 16 to 18*

- 1 bottle (750 milliliters) Jose Cuervo Golden Margarita
- 1 cup of orange juice
- 1 lime, juiced
- 3 oranges, sliced into rounds
- 2 mangos, peeled and diced
- 12 to 16 maraschino cherries
- 1/4 cup cherry juice
- 2 bottles (750 milliliters) dry white wine, chilled
- 1 liter lemon lime soda, chilled
- Garnish: orange slices and maraschino cherries (used from the sangria fruit)

1. In a pitcher, combine margarita, orange juice, lime juice, oranges, mangos, cherries and cherry juice. Chill at least one hour, and up to 4 hours.
2. Pour fruit mixture into large punch bowl. Stir in white wine and soda.
3. Pour into glasses, garnish and serve.





# Snake River Mart



## April Showers of Savings

Plants are in!  
Perennials,  
Veggies,  
Garden Seeds!

Boneless Beef  
**Rump Roast**



**\$249**  
lb.

Boneless Beef  
**Bottom Round Steak**



**\$269**  
lb.

**Top Soil  
Bark & Steer  
Compost  
Nursery Mix  
Perennial Mix  
Bark**

Cello Wrapped  
**Lettuce**



**\$109**  
ea.

Boneless Pork  
**Sirloin Chops**



**\$189**  
lb.

Boneless Pork  
**Sirloin Roast**



**\$179**  
lb.

Red Ripe  
**Strawberries**



**\$249**  
ea.  
1 lb.

**Cilantro**



**3 \$1**  
for  
3 Bunches

Western Family 12 oz.  
**Thin Sliced Meat** **\$219** ea.  
Kraft 12 oz.  
**Singles** **\$269** ea.  
Gem Pack  
**Chorizo** **\$299** lb.

Fast Fixin 10 oz.  
**Nuggets** **4 for \$5**  
Western Family 32 oz.  
**Shredded Cheese** **\$699** ea.  
Gem Pack  
**Weiners** **\$229** lb.

Large  
**Avocados** **2 for \$3**  
**Jalapeno Peppers** **\$109** lb.  
**Lemons** **2 for \$1**

1 lb.  
**Baby Carrots** **\$129** ea.  
8 oz. Whole  
**Mushrooms** **\$199** ea.  
Large Red Delicious  
**Braeburn Apples** **\$119** lb.

Kraft  
**Salad Dressing**



**2 for \$5**  
16 oz.  
Home Pride 20 oz.  
**White or Wheat Bread** **\$199** ea.

Meadowgold  
**Ice Cream**



**\$379** ea.  
56 oz.  
Jet Puff 16 oz.  
**Marshmallows** **\$159** ea.

**Coca Cola Products**



**3 for \$13**  
12pk 12oz Cans  
2 Liter Bottle  
**Coke Products** **\$129** ea.

**Budweiser Beer**



**\$1359** ea.  
18pk 12oz Cans  
12pk 12oz Cans  
**Busch Beer** **\$649** ea.

Western Family  
**Orange Juice** **\$569** ea.  
128 oz.  
Western Family  
**Milk 2%,1%,Fat Free** **\$329** ea.  
1 Gallon  
Western Family  
**Cottage Cheese** **\$259** ea.  
24 oz.  
Pringles  
**163 gr** **\$119** ea.  
Budget Gourmet  
**Frozen Entrees** **\$109** ea.  
8 oz.  
Western Family  
**Frozen Orange Juice** **\$169** ea.  
12 oz.

Post Cereals  
**Asst'd Varieties** **\$319** ea.  
Kraft  
**Pudding Cups** **\$129** ea.  
4pk - 3.5 oz.  
Crisco Oil  
**48 oz.** **\$389** ea.  
Propel  
**Flavored Water** **\$119** ea.  
23.7 oz.  
Tide 2x Liquid  
**Laundry Detergent** **\$699** ea.  
50 oz.  
Cascade Dishwasher  
**Detergent** **\$439** ea.  
75 oz.

Gatorade  
**32 oz.** **\$129** ea.  
Arrowhead  
**Spring Water** **\$579** ea.  
24pk .5 lt  
Pillsbury  
**Cake Mixes** **\$129** ea.  
18.25 oz.  
Planters Dry  
**Roasted Peanuts** **2 for \$5**  
16 oz.  
Yuban & Maxwell  
**House Coffee** **\$799** ea.  
36-39 oz.  
Campbell's  
**Select Soup** **\$179** ea.  
18.8-19 oz.

Doritos  
**Tortilla Chips** **\$219** ea.  
13 oz.  
Ruffles &  
**Sunchips** **2 for \$6**  
10.5-12 oz.  
Smuckers Jam  
& Preserves **\$279** ea.  
18 oz.  
Hefty Plates  
& Bowls **\$239** ea.  
25-80 ct.

SRM COUPON

**Soil Products**

**\$100 off** ANY BAG!

LIMIT 1 • PER VISIT • 4/02-4/08/08

**HOURS: Mon. - Sat. 6:00 a.m. to 10:00 p.m. - Sunday 7:00 a.m. to 9:00 p.m.**  
**Marsing, Idaho**

**WE RESERVE THE RIGHT TO LIMIT QUANTITIES AND CORRECT PRINTED ERRORS • PRICES EFFECTIVE 4/02/08 thru 4/08/08**